

Troubleshooting and debugging

Intro

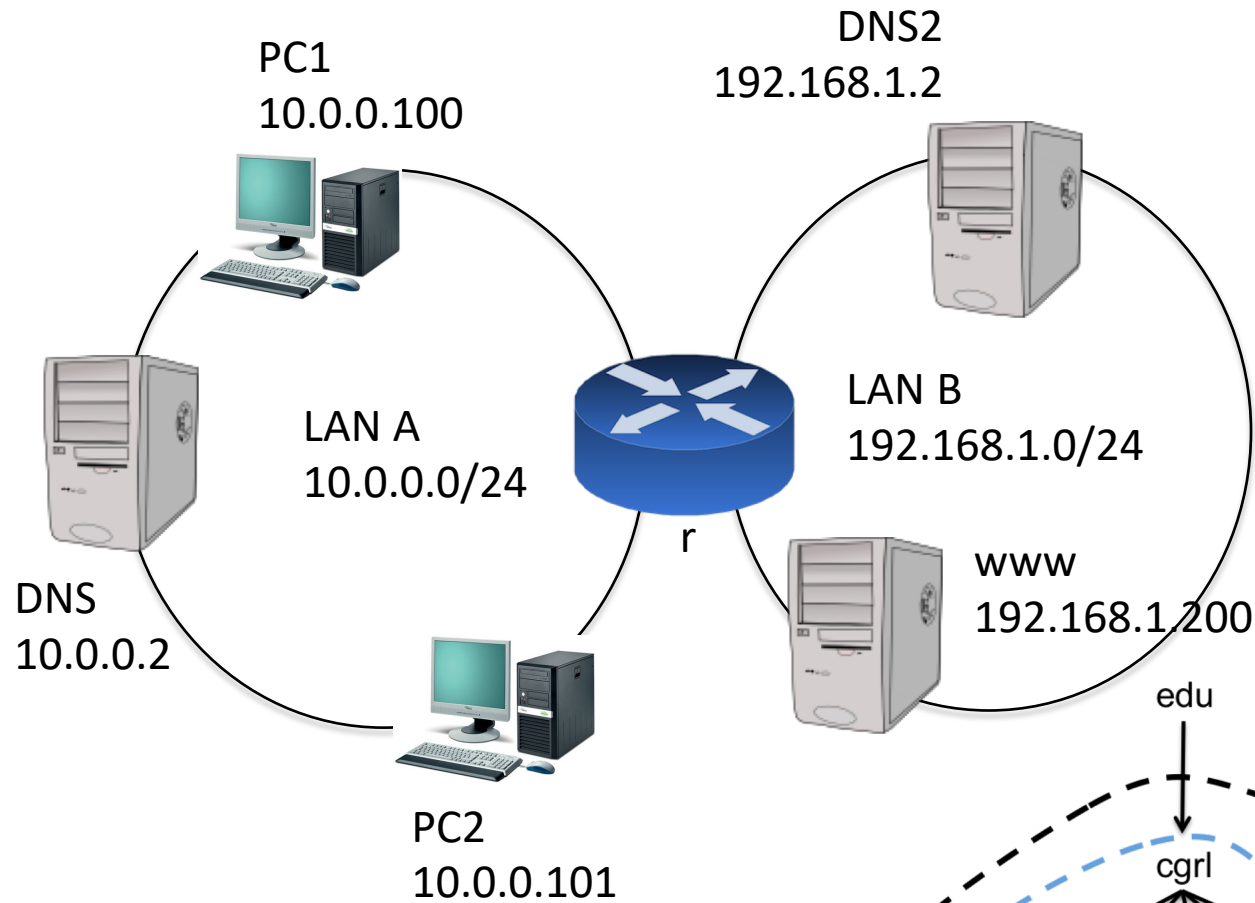
- We have 3 “broken” laboratories
- In each lab there is (at least) 1 miss-configuration
- Miss-configuration can be at any level
 - Syntax errors in app configuration file
 - Syntax errors in network configuration
 - Semantic errors...
- Problems are not notified properly
 - This is done on purpose, usually a customer is not able to really understand the problem behind...
- Approach
 - Verify the error (repeat it...)
 - Check for netkit startup error messages
 - Launch apps manually and check for errors
 - Check application log files
 - Check firewall
 - Use TCPDUMP (with “-n”, otherwise if we have a connectivity problem we don’t see anything)
 - Check network topology
 - Ecc...

Lab DNS

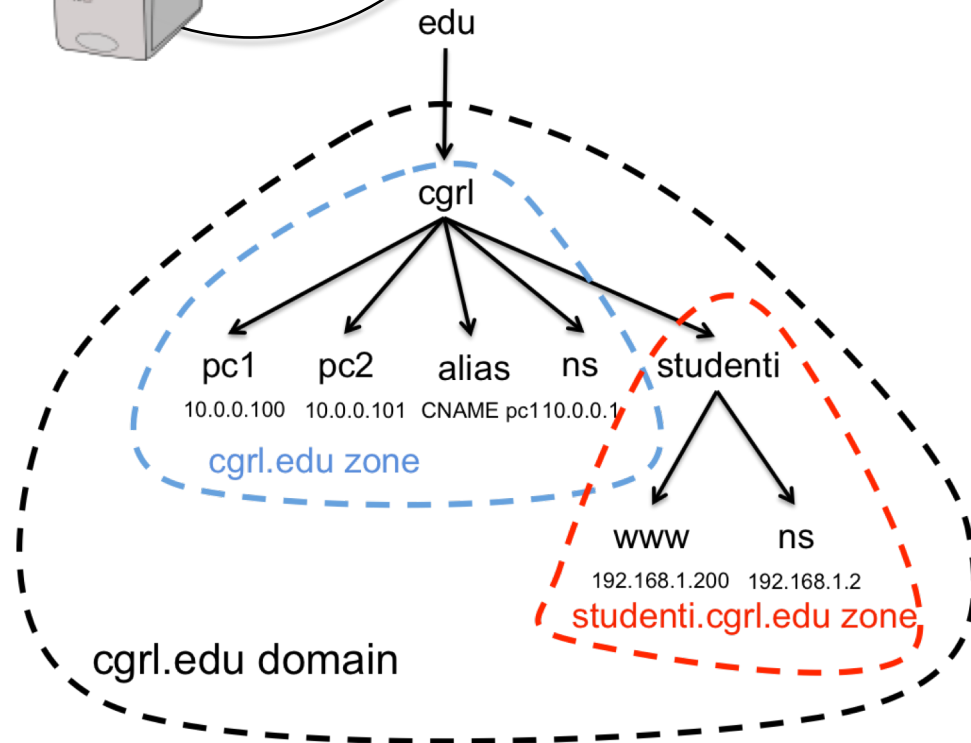
Lab and DNS topology in the next slide

We have 2 problems (to be solved in order)

1. pc1 cannot resolve pc2.cgri.edu
2. pc1 cannot resolve www.studenti.cgri.edu



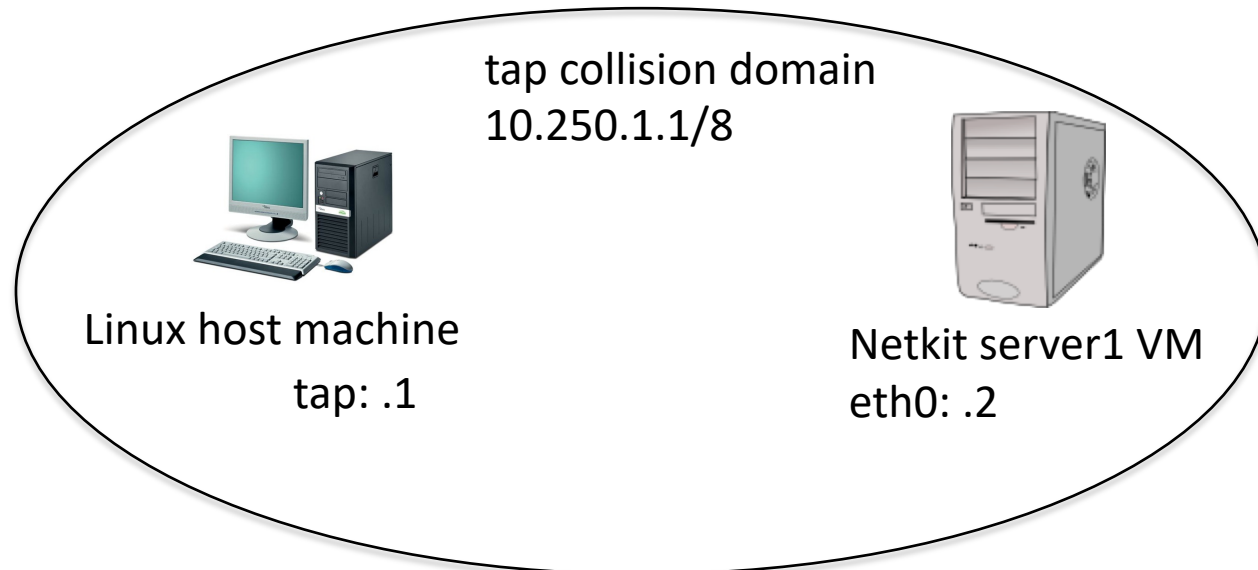
1. DNS is the default resolver for pc1 and pc2
2. DNS is authoritative for cgrl.edu
3. DNS2 is delegated for studenti.cgrl.edu



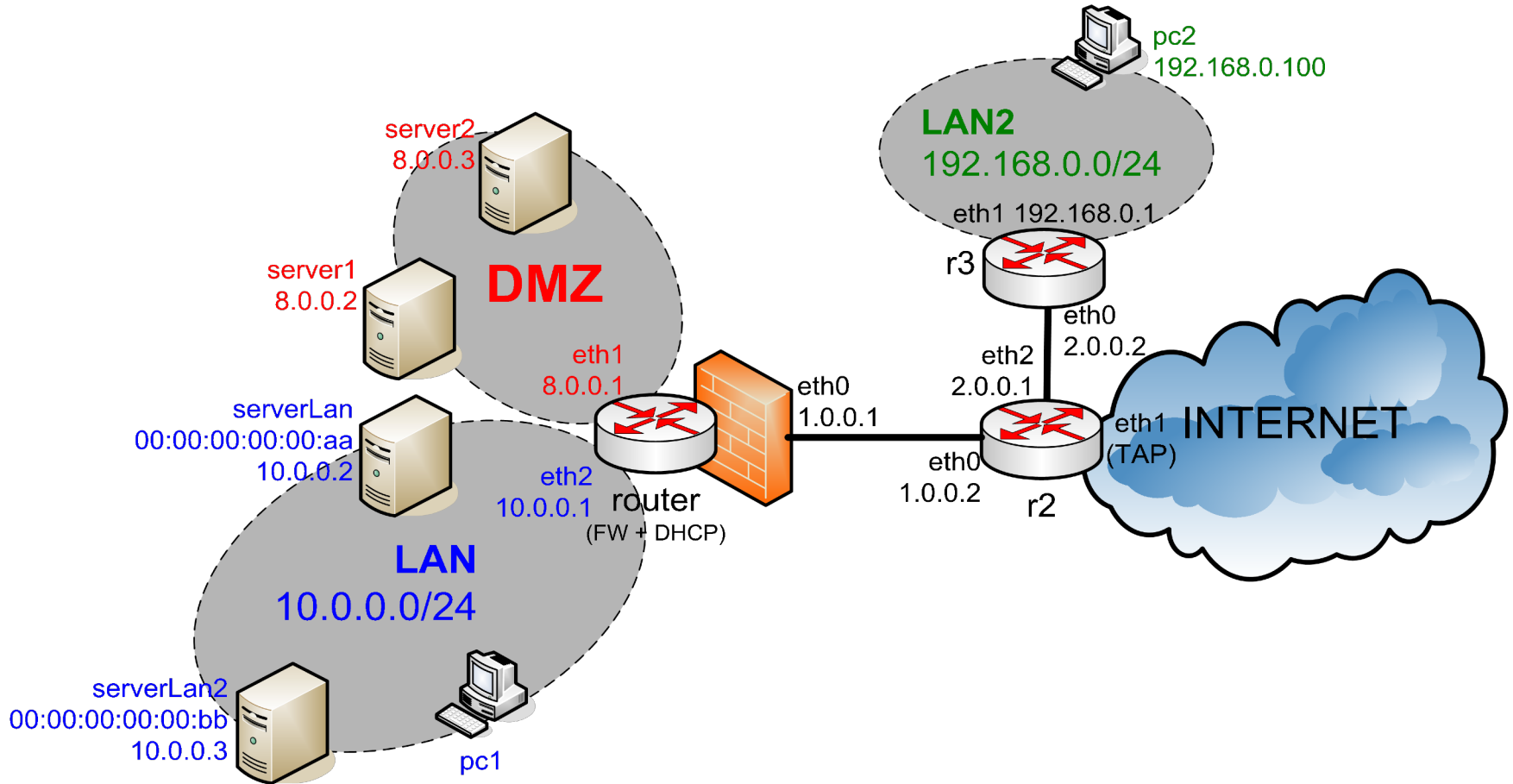
Lab Apache

Server1 has 2 virtual hosts

- www.mysite.com (/etc/apache2/sites-available/mysite)
- www.cgri.edu (/etc/apache2/sites-available/cgri)
- **TODO:** remember to configure static name:ip in /etc/hosts of the Linux host machine is required to reach the 2 virtual hosts
 - 10.250.1.2 --> www.mysite.com
 - 10.250.1.2 --> www.cgri.edu
- **Neither of the two works!**



Lab-rotto-marco



Lab-rotto-marco

We have 4 problems (to be solved in order)

1. pc2 cannot reach `www.google.com`
2. pc1 cannot reach `www.google.com`
3. Extern world (e.g. pc2) cannot reach DMZ
4. Server LAN (for which we have a DNAT entry configured in router) does not reply